

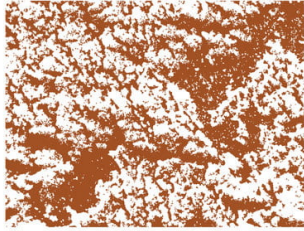
Chalmers Wines

Nero d'Avola Heathcote

Label design: Chalmers Nero d'Avola is grown on the special rocky top block of their vineyard; the label image is based on a photograph of the swirling rock surface.

Winemaker: Bart van Olphen
GI: Heathcote
Site(s): Estate vineyard at Colbinabbin, northern Heathcote

CHALMERS



GRECO

Grape varieties Nero d'Avola

Altitude 210m - 220m ASL

Soil Diverse rocky terrain of ironstone, dolerite, green basalt, shale and quartz

Alcohol 13.5%

Tasting notes

Vibrant and juicy, but with a pleasant reduction that adds sternness and complexity. Flavors of dusty raspberry, Davidson plum (a sour native plum), and graphite. Fine tannins and silky mouthfeel.

Banville

Wine Merchants

www.banvillewine.com

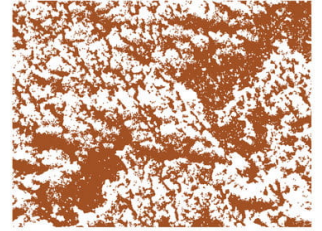
Chalmers Wines

Nero d'Avola Heathcote

Label design: Chalmers Nero d'Avola is grown on the special rocky top block of their vineyard; the label image is based on a photograph of the swirling rock surface.

Winemaker: Bart van Olphen
GI: Heathcote
Site(s): Estate vineyard at Colbinabbin, northern Heathcote

CHALMERS



GRECO

Grape varieties Nero d'Avola

Altitude 210m - 220m ASL

Soil Diverse rocky terrain of ironstone, dolerite, green basalt, shale and quartz

Alcohol 13.5%

Tasting notes

Vibrant and juicy, but with a pleasant reduction that adds sternness and complexity. Flavors of dusty raspberry, Davidson plum (a sour native plum), and graphite. Fine tannins and silky mouthfeel.

Banville

Wine Merchants

www.banvillewine.com

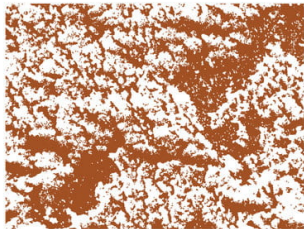
Chalmers Wines

Nero d'Avola Heathcote

Label design: Chalmers Nero d'Avola is grown on the special rocky top block of their vineyard; the label image is based on a photograph of the swirling rock surface.

Winemaker: Bart van Olphen
GI: Heathcote
Site(s): Estate vineyard at Colbinabbin, northern Heathcote

CHALMERS



GRECO

Grape varieties Nero d'Avola

Altitude 210m - 220m ASL

Soil Diverse rocky terrain of ironstone, dolerite, green basalt, shale and quartz

Alcohol 13.5%

Tasting notes

Vibrant and juicy, but with a pleasant reduction that adds sternness and complexity. Flavors of dusty raspberry, Davidson plum (a sour native plum), and graphite. Fine tannins and silky mouthfeel.

Banville

Wine Merchants

www.banvillewine.com

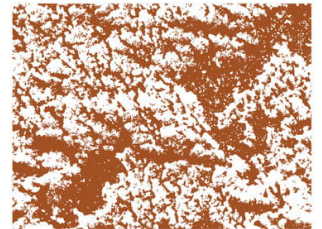
Chalmers Wines

Nero d'Avola Heathcote

Label design: Chalmers Nero d'Avola is grown on the special rocky top block of their vineyard; the label image is based on a photograph of the swirling rock surface.

Winemaker: Bart van Olphen
GI: Heathcote
Site(s): Estate vineyard at Colbinabbin, northern Heathcote

CHALMERS



GRECO

Grape varieties Nero d'Avola

Altitude 210m - 220m ASL

Soil Diverse rocky terrain of ironstone, dolerite, green basalt, shale and quartz

Alcohol 13.5%

Tasting notes

Vibrant and juicy, but with a pleasant reduction that adds sternness and complexity. Flavors of dusty raspberry, Davidson plum (a sour native plum), and graphite. Fine tannins and silky mouthfeel.

Banville

Wine Merchants

www.banvillewine.com