

Pala

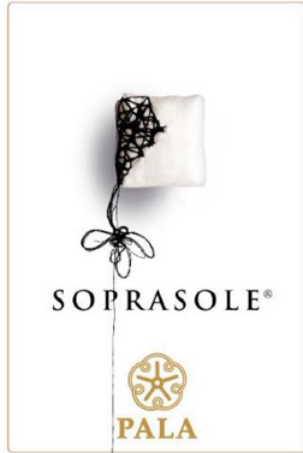
*Soprasole Vermentino di Sardegna*  
**DOC**

Vermentino is considered indigenous to Sardegna, where it is widely cultivated and has deep historical roots. Soprasole, meaning 'above the sun', is a tribute to the stunning landscape of Sardegna —brilliant light illuminating white cliffs and emerald vineyards.

**Grape varieties** Vermentino

**Altitude** 150 - 180m ASL

**Soil** Calcareous



**Tasting notes**

Bright straw yellow color with greenish reflections. Persistent floral aromas with a touch of herbaceous notes and a hint of lime. On the palate, herbs are predominant with notes of white flowers and citrus. Pair with seafood and lightly seasoned fish dishes.

**Banville**  
Wine Merchants

[www.banvillewine.com](http://www.banvillewine.com)

Pala

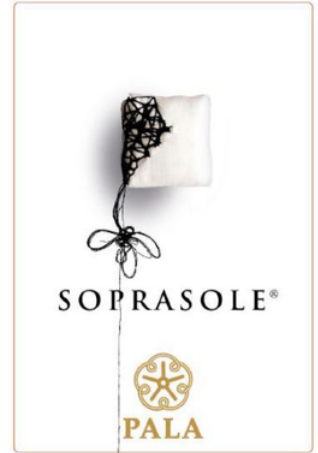
*Soprasole Vermentino di Sardegna*  
**DOC**

Vermentino is considered indigenous to Sardegna, where it is widely cultivated and has deep historical roots. Soprasole, meaning 'above the sun', is a tribute to the stunning landscape of Sardegna —brilliant light illuminating white cliffs and emerald vineyards.

**Grape varieties** Vermentino

**Altitude** 150 - 180m ASL

**Soil** Calcareous



**Tasting notes**

Bright straw yellow color with greenish reflections. Persistent floral aromas with a touch of herbaceous notes and a hint of lime. On the palate, herbs are predominant with notes of white flowers and citrus. Pair with seafood and lightly seasoned fish dishes.

**Banville**  
Wine Merchants

[www.banvillewine.com](http://www.banvillewine.com)

Pala

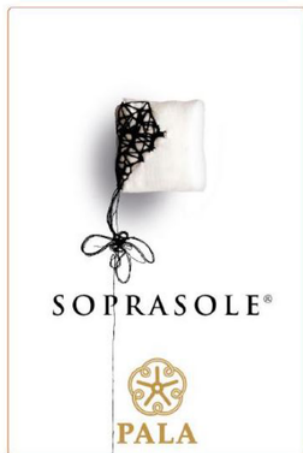
*Soprasole Vermentino di Sardegna*  
**DOC**

Vermentino is considered indigenous to Sardegna, where it is widely cultivated and has deep historical roots. Soprasole, meaning 'above the sun', is a tribute to the stunning landscape of Sardegna —brilliant light illuminating white cliffs and emerald vineyards.

**Grape varieties** Vermentino

**Altitude** 150 - 180m ASL

**Soil** Calcareous



**Tasting notes**

Bright straw yellow color with greenish reflections. Persistent floral aromas with a touch of herbaceous notes and a hint of lime. On the palate, herbs are predominant with notes of white flowers and citrus. Pair with seafood and lightly seasoned fish dishes.

**Banville**  
Wine Merchants

[www.banvillewine.com](http://www.banvillewine.com)

Pala

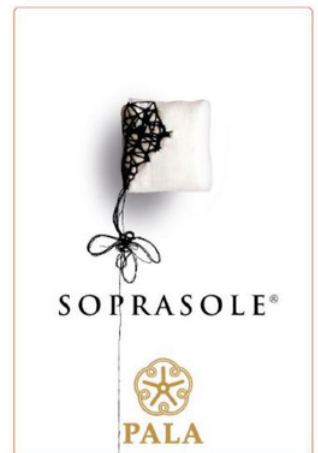
*Soprasole Vermentino di Sardegna*  
**DOC**

Vermentino is considered indigenous to Sardegna, where it is widely cultivated and has deep historical roots. Soprasole, meaning 'above the sun', is a tribute to the stunning landscape of Sardegna —brilliant light illuminating white cliffs and emerald vineyards.

**Grape varieties** Vermentino

**Altitude** 150 - 180m ASL

**Soil** Calcareous



**Tasting notes**

Bright straw yellow color with greenish reflections. Persistent floral aromas with a touch of herbaceous notes and a hint of lime. On the palate, herbs are predominant with notes of white flowers and citrus. Pair with seafood and lightly seasoned fish dishes.

**Banville**  
Wine Merchants

[www.banvillewine.com](http://www.banvillewine.com)