

Iconic Wine

Zinfandel Old Gods

Old Gods Zinfandel is sourced exclusively from the Schmiedt Vineyard. Located on the eastern side of the Mokelumne River AVA, the vineyard was planted in 1902 primarily with Zinfandel, with a smattering of Mission and Tocai inter-planted. These ancient 120-year-old vines predate broadcast radio! The vineyard was dry-farmed until the 1970s, when irrigation was installed to help protect the old vines. Still, the water has only been turned on 3-4 times since. Head trained and many now propped up with posts, the vines sit in the silty clay soils of the Mokelumne River basin. Despite the fertile soils, yields are extremely low, with only a few bunches per plant.



Grape varieties Zinfandel

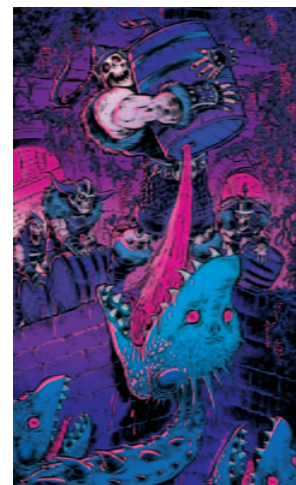
Banville
Wine Merchants

www.banvillewine.com

Iconic Wine

Zinfandel Old Gods

Old Gods Zinfandel is sourced exclusively from the Schmiedt Vineyard. Located on the eastern side of the Mokelumne River AVA, the vineyard was planted in 1902 primarily with Zinfandel, with a smattering of Mission and Tocai inter-planted. These ancient 120-year-old vines predate broadcast radio! The vineyard was dry-farmed until the 1970s, when irrigation was installed to help protect the old vines. Still, the water has only been turned on 3-4 times since. Head trained and many now propped up with posts, the vines sit in the silty clay soils of the Mokelumne River basin. Despite the fertile soils, yields are extremely low, with only a few bunches per plant.



Grape varieties Zinfandel

Banville
Wine Merchants

www.banvillewine.com

Iconic Wine

Zinfandel Old Gods

Old Gods Zinfandel is sourced exclusively from the Schmiedt Vineyard. Located on the eastern side of the Mokelumne River AVA, the vineyard was planted in 1902 primarily with Zinfandel, with a smattering of Mission and Tocai inter-planted. These ancient 120-year-old vines predate broadcast radio! The vineyard was dry-farmed until the 1970s, when irrigation was installed to help protect the old vines. Still, the water has only been turned on 3-4 times since. Head trained and many now propped up with posts, the vines sit in the silty clay soils of the Mokelumne River basin. Despite the fertile soils, yields are extremely low, with only a few bunches per plant.



Grape varieties Zinfandel

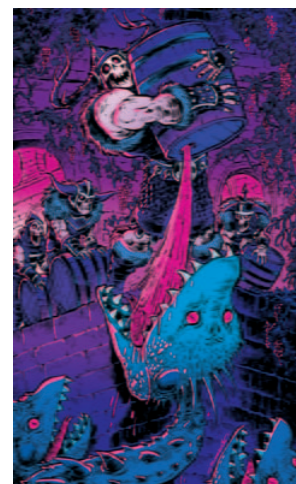
Banville
Wine Merchants

www.banvillewine.com

Iconic Wine

Zinfandel Old Gods

Old Gods Zinfandel is sourced exclusively from the Schmiedt Vineyard. Located on the eastern side of the Mokelumne River AVA, the vineyard was planted in 1902 primarily with Zinfandel, with a smattering of Mission and Tocai inter-planted. These ancient 120-year-old vines predate broadcast radio! The vineyard was dry-farmed until the 1970s, when irrigation was installed to help protect the old vines. Still, the water has only been turned on 3-4 times since. Head trained and many now propped up with posts, the vines sit in the silty clay soils of the Mokelumne River basin. Despite the fertile soils, yields are extremely low, with only a few bunches per plant.



Grape varieties Zinfandel

Banville
Wine Merchants

www.banvillewine.com