

Osmote

## *This Is Red Pet Nat*

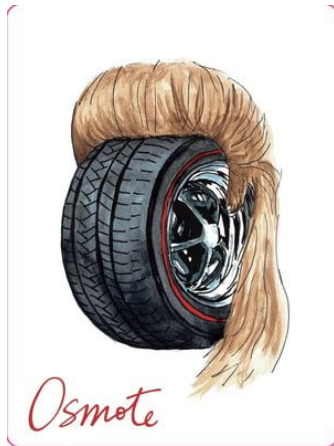
**The FLX:**  
An absolutely unique cold continental wine region made possible by the glacial lakes that define it. These lakes, as long as 40 miles and as deep at 600ft, never freeze, which keeps the land around them warm in the winter and cool in the summer. Since the region was carved out by a glacier in the last ice age there is a tremendous variety of soil types across the region.

**Grape varieties** 50% Marquette, 45% Leon Millot, 5% Cabernet Franc

**Alcohol** 11.5%

### **Tasting notes**

Violet rim and pomegranate colored body and full of refreshing effervescence. There are fresh berry aromas with a subtle savory edge hinting of eucalypt. Flavors are of pomegranate and a touch of black olive with a chalky tannicity. The wine shows the elegance of the modern American hybrid Marquette.



**Banville**  
Wine Merchants

[www.banvillewine.com](http://www.banvillewine.com)

Osmote

## *This Is Red Pet Nat*

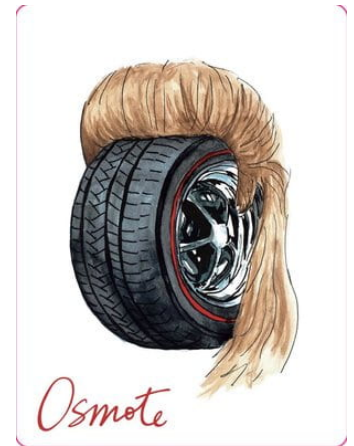
**The FLX:**  
An absolutely unique cold continental wine region made possible by the glacial lakes that define it. These lakes, as long as 40 miles and as deep at 600ft, never freeze, which keeps the land around them warm in the winter and cool in the summer. Since the region was carved out by a glacier in the last ice age there is a tremendous variety of soil types across the region.

**Grape varieties** 50% Marquette, 45% Leon Millot, 5% Cabernet Franc

**Alcohol** 11.5%

### **Tasting notes**

Violet rim and pomegranate colored body and full of refreshing effervescence. There are fresh berry aromas with a subtle savory edge hinting of eucalypt. Flavors are of pomegranate and a touch of black olive with a chalky tannicity. The wine shows the elegance of the modern American hybrid Marquette.



**Banville**  
Wine Merchants

[www.banvillewine.com](http://www.banvillewine.com)

Osmote

## *This Is Red Pet Nat*

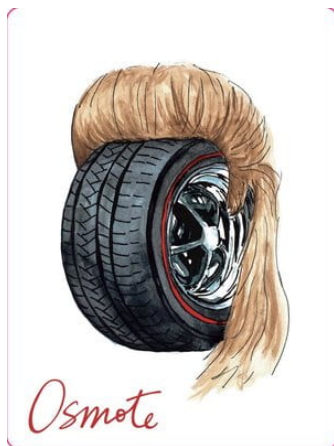
**The FLX:**  
An absolutely unique cold continental wine region made possible by the glacial lakes that define it. These lakes, as long as 40 miles and as deep at 600ft, never freeze, which keeps the land around them warm in the winter and cool in the summer. Since the region was carved out by a glacier in the last ice age there is a tremendous variety of soil types across the region.

**Grape varieties** 50% Marquette, 45% Leon Millot, 5% Cabernet Franc

**Alcohol** 11.5%

### **Tasting notes**

Violet rim and pomegranate colored body and full of refreshing effervescence. There are fresh berry aromas with a subtle savory edge hinting of eucalypt. Flavors are of pomegranate and a touch of black olive with a chalky tannicity. The wine shows the elegance of the modern American hybrid Marquette.



**Banville**  
Wine Merchants

[www.banvillewine.com](http://www.banvillewine.com)

Osmote

## *This Is Red Pet Nat*

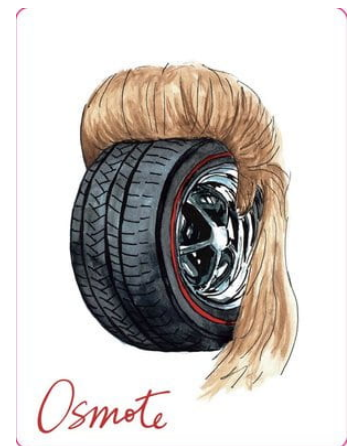
**The FLX:**  
An absolutely unique cold continental wine region made possible by the glacial lakes that define it. These lakes, as long as 40 miles and as deep at 600ft, never freeze, which keeps the land around them warm in the winter and cool in the summer. Since the region was carved out by a glacier in the last ice age there is a tremendous variety of soil types across the region.

**Grape varieties** 50% Marquette, 45% Leon Millot, 5% Cabernet Franc

**Alcohol** 11.5%

### **Tasting notes**

Violet rim and pomegranate colored body and full of refreshing effervescence. There are fresh berry aromas with a subtle savory edge hinting of eucalypt. Flavors are of pomegranate and a touch of black olive with a chalky tannicity. The wine shows the elegance of the modern American hybrid Marquette.



**Banville**  
Wine Merchants

[www.banvillewine.com](http://www.banvillewine.com)