



AN UNIQUE ESTATE IN PROVENCE

The 100 hectares of vines of the Château l'Escarelle flourish in a green sunny setting of 1000 hectares of unspoiled countryside.

Organic certified, the Château l'Escarelle is deeply committed to environmental protection.



THE PIONEERING VISION OF A MAN WITH A PASSION

Yann Pineau felt in love with this stunning place and took over the estate in 2014. Thanks to his several investments all together with sustainable farming practices, he has injected new life into the estate with a view to turning it into one of the most prestigious wine producers in Provence.



ORGANIC ROSÉ WINES, A BOOMING MARKET

Interest in organic wines and sustainable approaches to wine growing is constantly on the increase. At the Château l'Escarelle, all our vines are grown organically.

Attractively and stylishly packaged, our wines are exactly what today's rosé wine drinkers are looking for.



AWARD-WINNING WINES

Testament to their quality and our expertise, our wines frequently scoop awards in high-profile competitions and win over more top wine critics with every passing year.



A GLOBAL REPUTATION

Château l'Escarelle wines are widely served in some of the most prestigious restaurants in both France and further afield.



Lil' Rock Beach | SAINT-BARTHÉLEMY



Foc Sentosa | SINGAPOUR



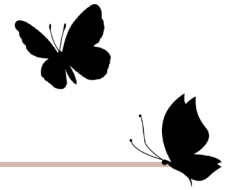
Le Pacha | IBIZA



Apurva Kempinski | BALI

ORGANIC IS THE NEW CHIC.





OUR RANGE OF WINES

PALM

IGP Méditerranée - Bio



Its refined packaging and outstanding quality makes our Palm rosé wine perfect for serving by the glass in restaurant outdoor terraces. And let's not forget its name, which is a nod to its Provençal roots!



RUMEURS

IGP Méditerranée



Born from a partnership with a young French artist living in Barcelona, Rumeurs' visual design beckons us to visit new places and experience something different. This delightful rosé goes wonderfully with sun-drenched Mediterranean cuisine.

CHÂTEAU

AOP Coteaux Varois en Provence - Bio



« Château » is the most iconic and longest established of our wines. It's been blended in the traditional way using a short maceration period. Designed to be drunk fairly soon, this elegant, fruity rosé is perfect for a summertime aperitif.

| available in white and red



LE PACHA

AOP Coteaux Varois en Provence - Bio



Le Pacha refers to a rare Provençal butterfly that's found in the estate's Butterfly Garden. The unusual but elegant bottle design symbolizes the Escarelle's commitment to the environment and cement this wine's status as a one-of-a-kind.

LES DEUX ANGES

AOP Coteaux Varois en Provence - Bio



Les Deux Anges refers to the discovery of the statues of two cherubs during the construction of the new wine cellar. Chosen from specific plots, crafted and aged with the utmost of care and sporting a bottle design with the unmistakable Escarelle stamp; all this combines to make this rosé an absolute must-have for the most fashionable fine dining establishments!

| available in white and red



CROIX D'ENGARDIN

AOP Coteaux Varois en Provence - Bio



Named after the Engardin valley and the area's rich history, Croix d'Engardin is the very finest, most sophisticated wine produced on the estate, with each bottle being individually numbered. This rosé has a Syrah base and is designed to be a superb wine to be enjoyed with great food at the most prestigious restaurants.

| available in white and red